



# Electronic Components Electro-mechanical

T. Thoen

# Electro-Mechanical

## Electro-mechanical components

- Have both electrical and mechanical properties

### Examples:

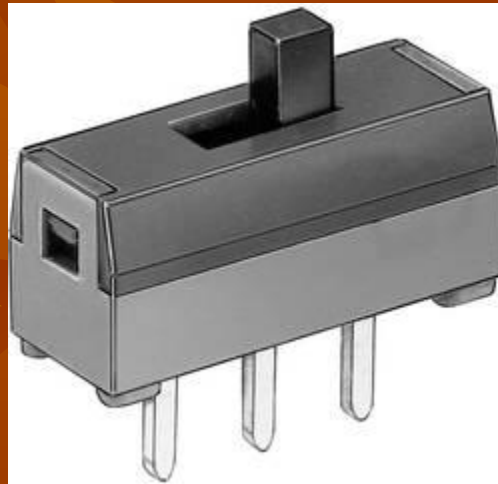
- Switches
- Relays
- Speakers
- Potentiometers (although also considered passive)

# Switches

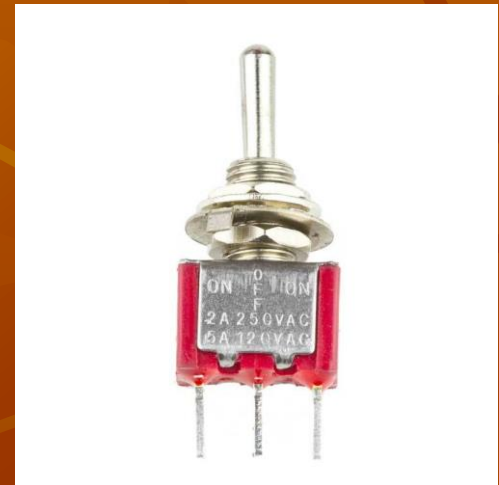
- Many different types and classifications
- Used to interrupt or re-direct current flow in a circuit
- Many package types – we commonly use slide or pushbutton switches



Pushbuttons



Slide switch



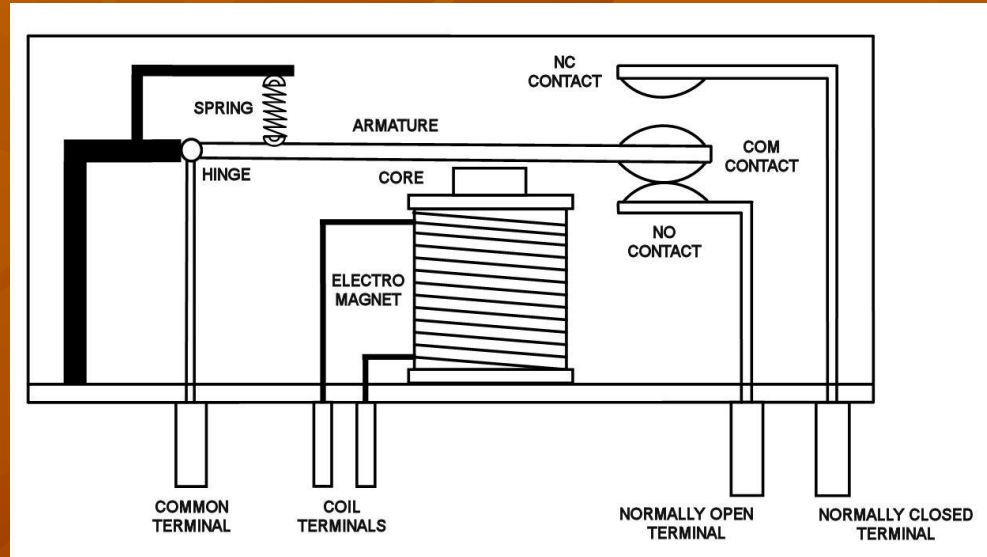
Toggle switch

# Relays

- Composed of two parts – coil and contacts
- Uses small currents / Voltages to switch large currents / Voltages
- Isolates input from output



# Relay construction



<http://www.gloab.com/relays/NO%20RELAY.jpg>